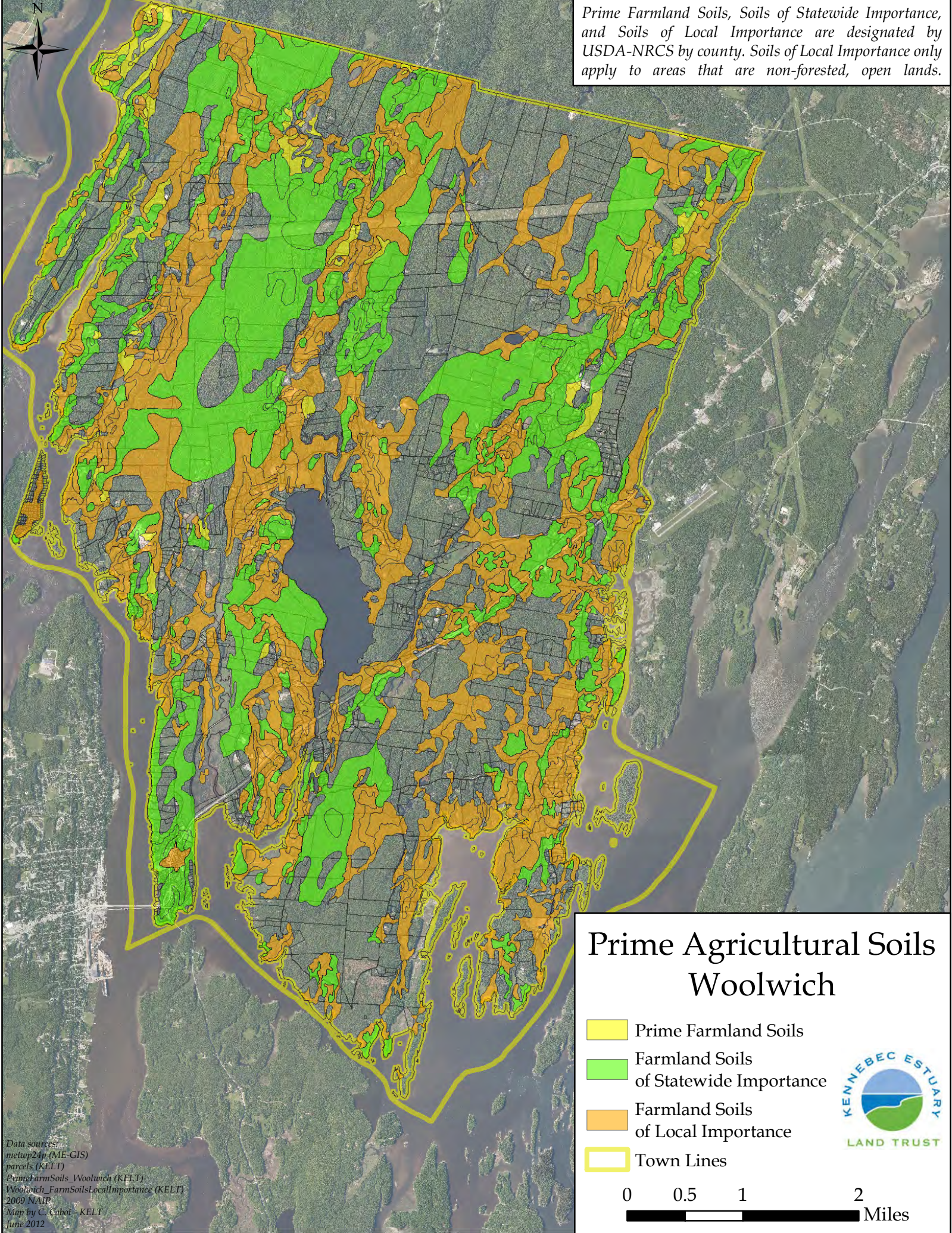
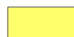



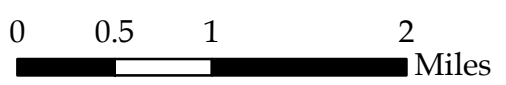


Prime Farmland Soils, Soils of Statewide Importance, and Soils of Local Importance are designated by USDA-NRCS by county. Soils of Local Importance only apply to areas that are non-forested, open lands.



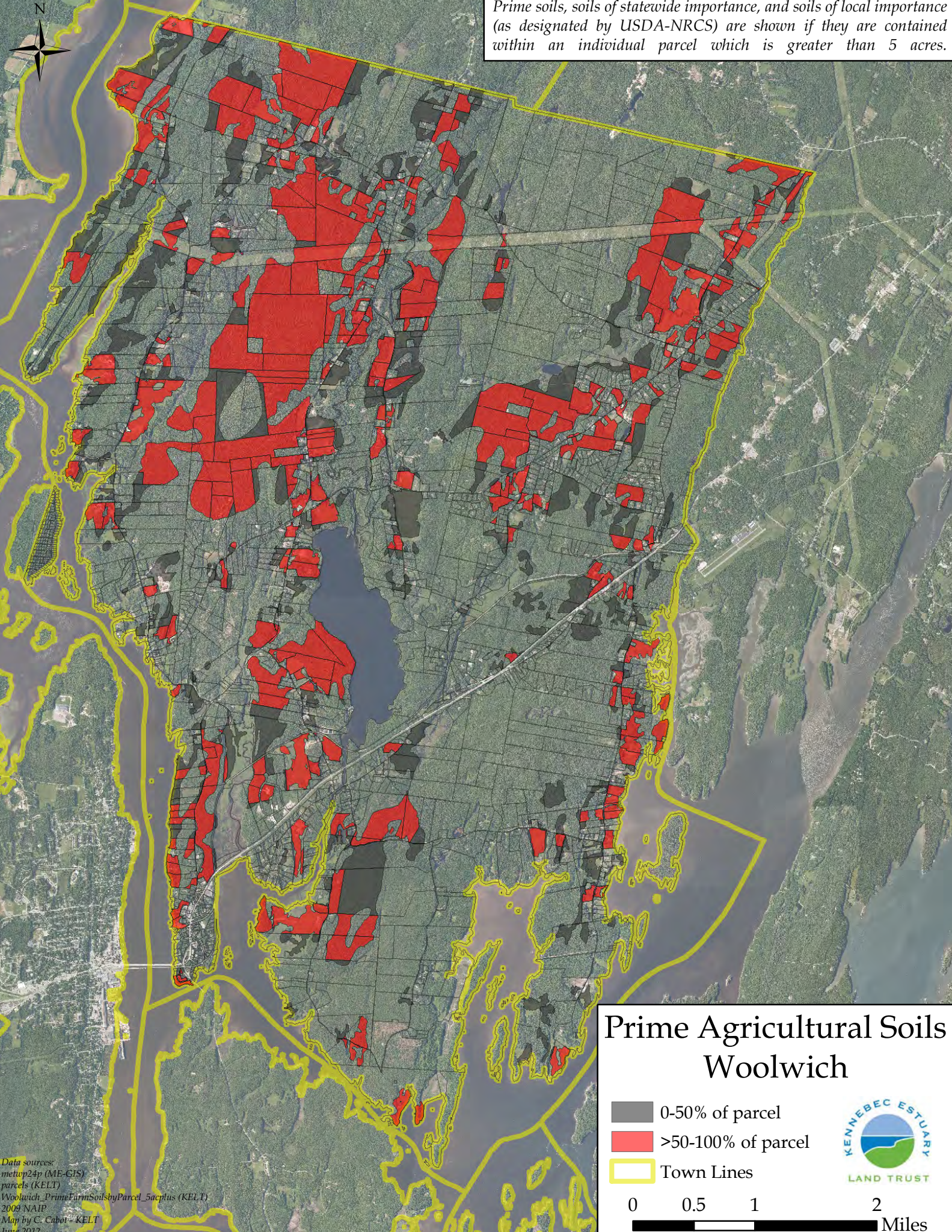
Prime Agricultural Soils Woolwich

-  Prime Farmland Soils
-  Farmland Soils of Statewide Importance
-  Farmland Soils of Local Importance
-  Town Lines



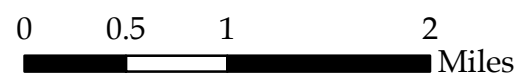
Data sources:
metap24p (ME-GIS)
parcels (KELT)
PrimeFarmSoils_Woolwich (KELT)
Woolwich_FarmSoilsLocalImportance (KELT)
2009 NAIP
Map by C. Cabot - KELT
June 2012

Prime soils, soils of statewide importance, and soils of local importance (as designated by USDA-NRCS) are shown if they are contained within an individual parcel which is greater than 5 acres.



Prime Agricultural Soils Woolwich

- 0-50% of parcel
- >50-100% of parcel
- Town Lines



Data sources:
 metrop24p (ME-GIS)
 parcels (KELT)
 Woolwich_PrimeFarmSoilsbyParcel_5acplus (KELT)
 2009 NAIP
 Map by C. Cabot - KELT
 June 2012